

Astoria Parks & Recreation

2026-2036 MASTER PLAN UPDATE

Your parks, your future!



WELCOME TO OPEN HOUSE #4!

Astoria Parks & Recreation has hired consultant Mackenzie to work with the community to develop an updated Parks & Recreation Master Plan that will guide our parks and programming into the future.

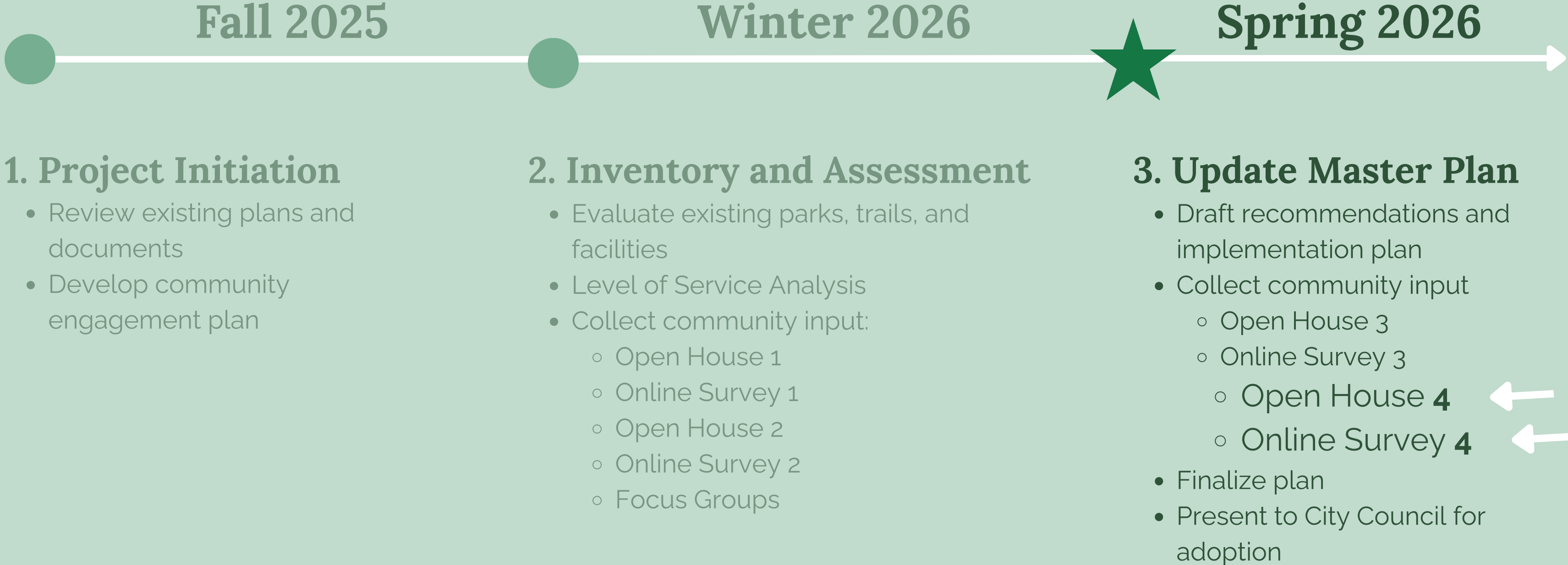
This project has been funded in part through a \$50,000 grant from the Oregon Parks and Recreation Department (OPRD).

We want **YOUR** feedback on the projects, programs, and services you'd like us to focus on in the next ten years.



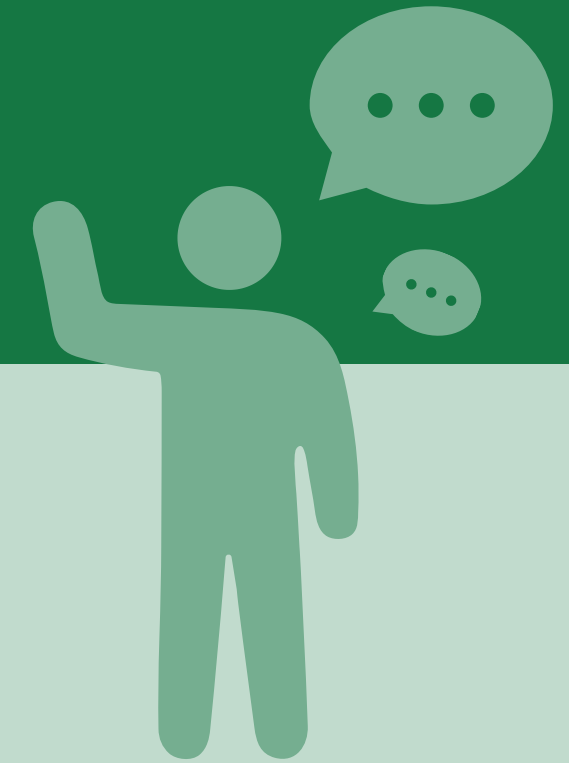
APRD 2026 - 2036 MASTER PLAN UPDATE

Planning Process



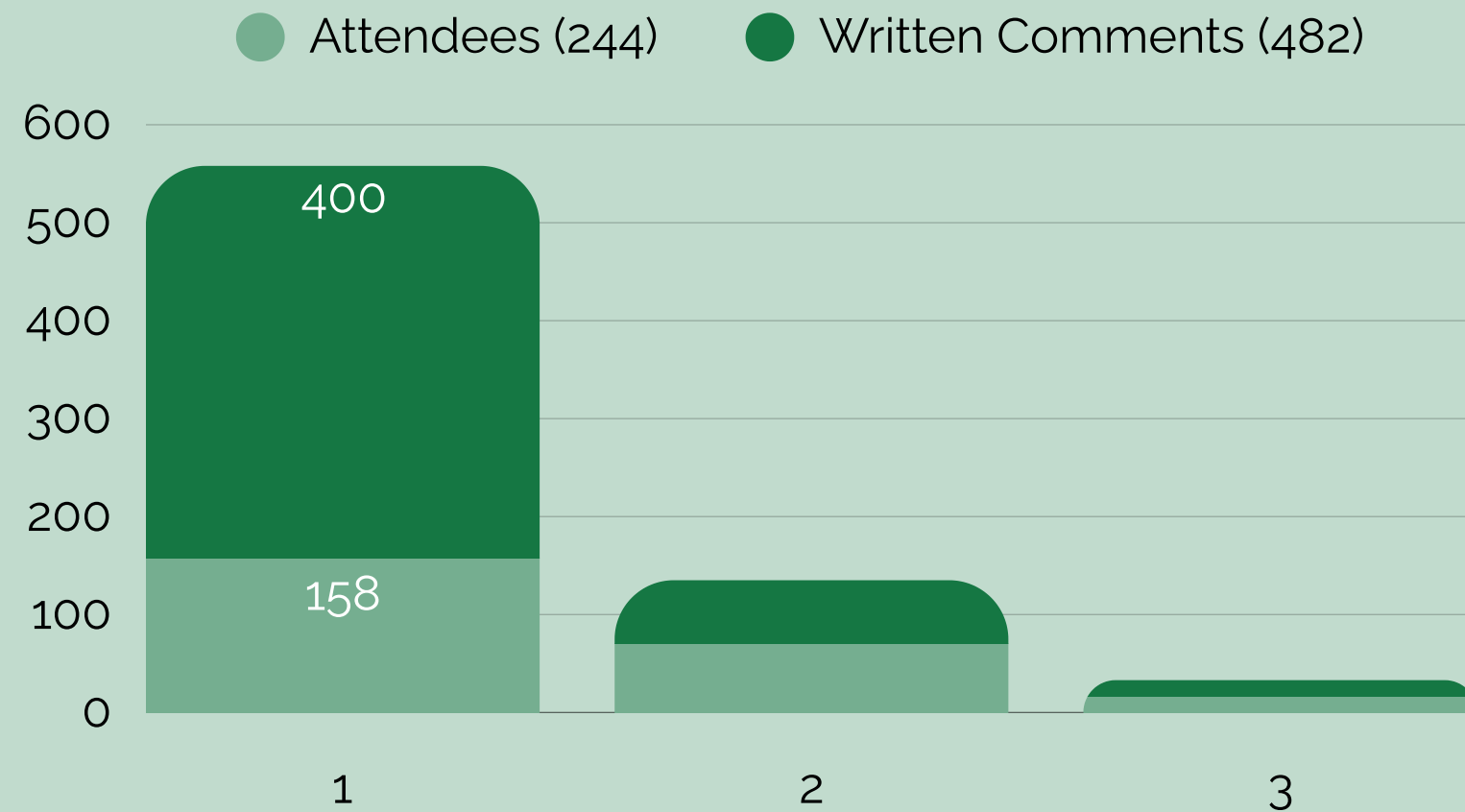
COMMUNITY ENGAGEMENT *Highlights*

1.3 comments
per participant

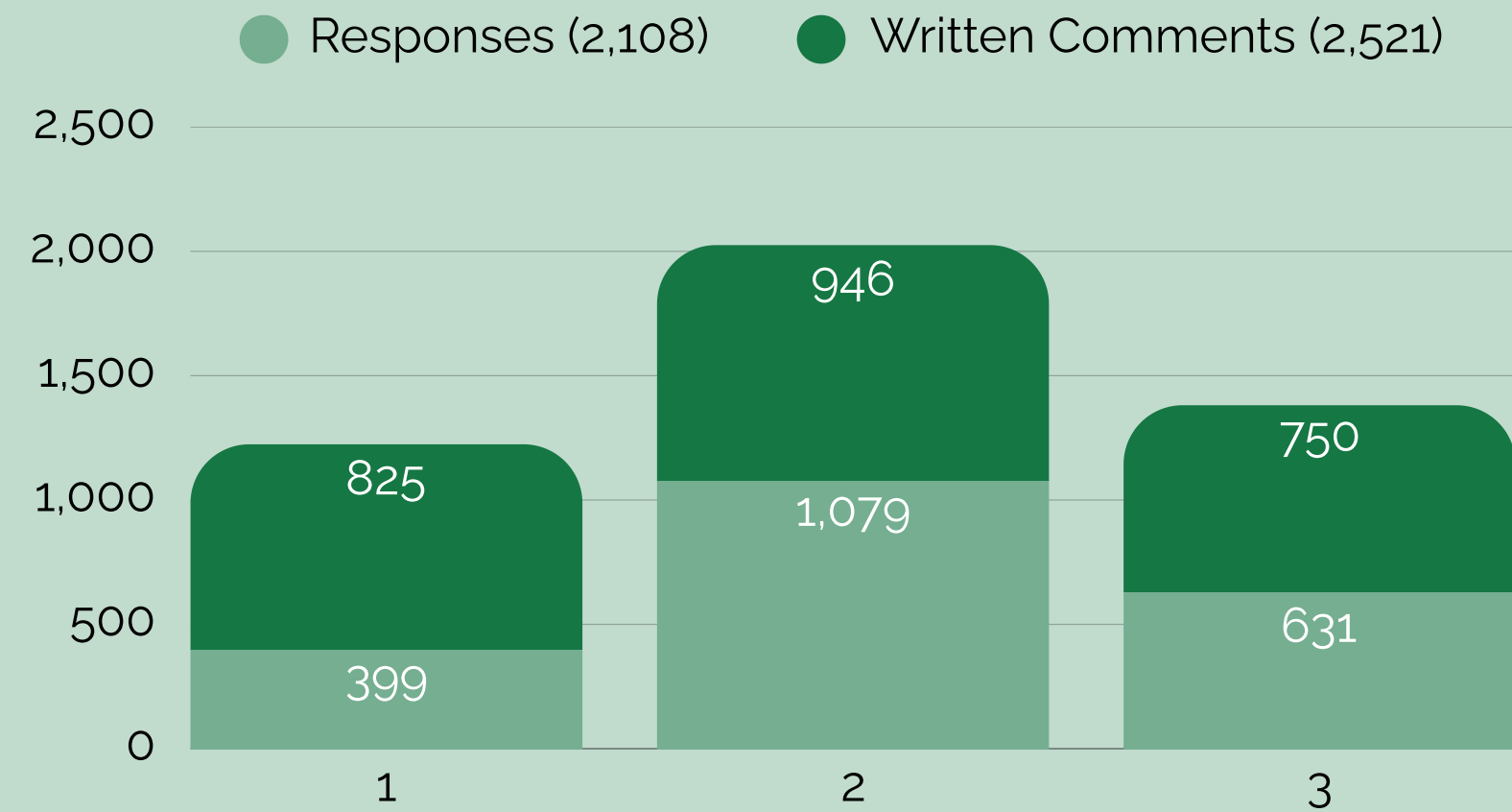


- **2,352 participants** and **3,003 total written comments and counting!**

Open Houses



Surveys



COMMUNITY ENGAGEMENT *Highlights*

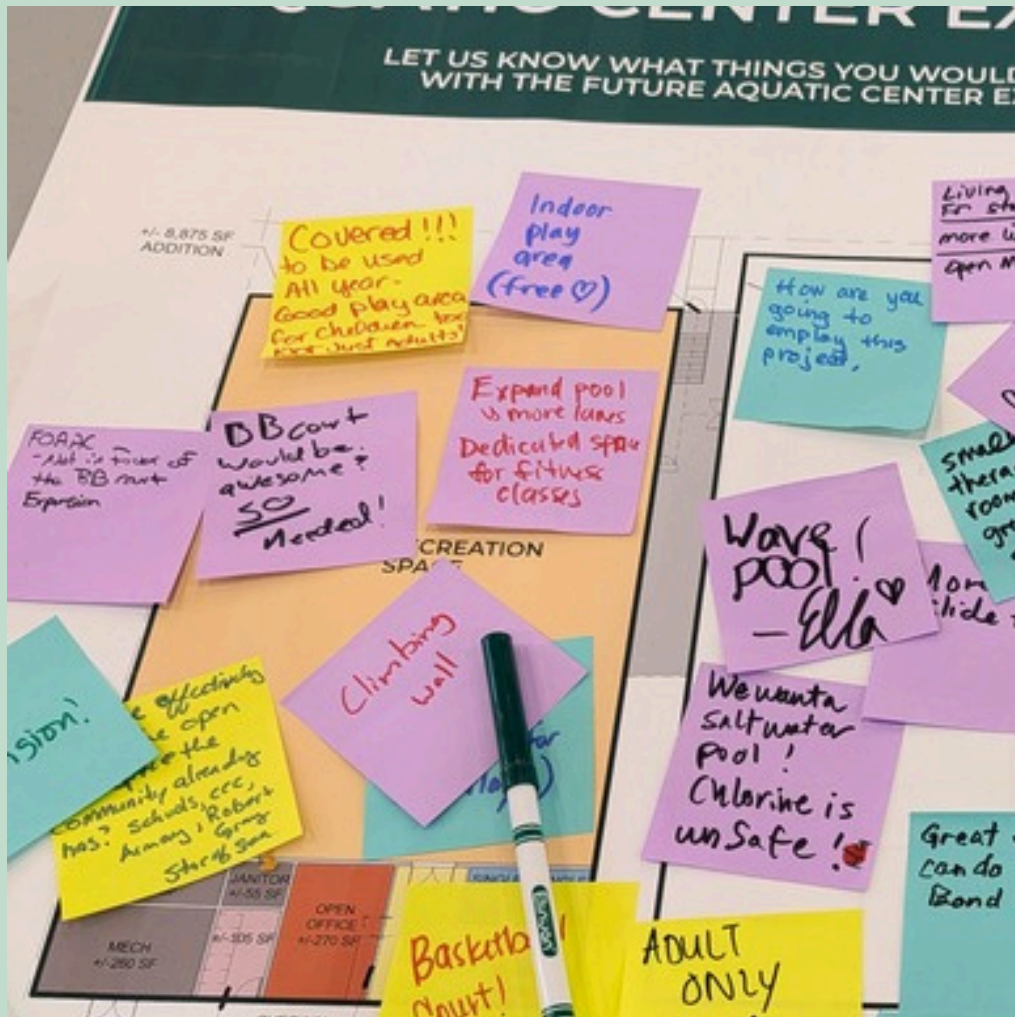
OPEN HOUSE #1 - November 15, 2025

OPEN HOUSE #2 - January 24, 2026

OPEN HOUSE #3 - March 28, 2026



COMMUNITY ENGAGEMENT Highlights



Appreciation for parks as vital assets to the community



Priorities for investments in programs and facilities



Input on master plan recommendations

OPEN HOUSE #4

Draft Implementation Strategy

Look for the following information today!

- **Implementation Categories**

- Operations & Maintenance
- Capital Projects
- Programs
- Planning Initiatives

- **Action Items**

- **Timeframe to Initiate**

OPERATIONS & MAINTENANCE						
	DEPARTMENT REVENUE & FEES	COMMUNICATIONS & MARKETING	PARKS & TRAIL MAINTENANCE		SAFETY	
ACTION ITEM	<ul style="list-style-type: none"> A. Ensure sustainable revenue generation by reviewing user fees and operating expenses annually. - Consider working with outside consultants as appropriate. - Evaluate appropriate timing for any planned increases to user fees. 	<ul style="list-style-type: none"> A. Improve APHO web page. - Enhance overall user interface. - Provide easy access to information and registration opportunities for upcoming community events, youth recreation programs, and adult recreation programs. Provide easy access to an interactive map of parks, trails, and indoor recreation facilities. 	<ul style="list-style-type: none"> A. Prioritize maintenance and repair of existing parks, trails, and recreation amenities. - Enhance maintenance at highest-use parks and trails. - Increase frequency of trash pickups where appropriate. - Invest in improvements to sport courts and fields (e.g. drainage, training infrastructure, and irrigation). 	<ul style="list-style-type: none"> B. Replace aging playground equipment. - Establish priorities based on park use levels, safety considerations, variety of options for different age groups and ability, and neighborhood level of service. - As part of this effort, incorporate accessible and inclusive play equipment to increase opportunities for people with disabilities. 	<ul style="list-style-type: none"> A. Provide additional lighting where appropriate. 	<ul style="list-style-type: none"> B. Continue to coordinate with Arizona Police Department and other local agencies, service providers, and non-profit organizations to address issues related to illegal camping and accumulation of waste and personal belongings at public sites.
TIMEFRAME TO INITIATE	Ongoing	Ongoing	Ongoing	0 - 2 Years	0 - 2 Years	Ongoing
TARGET COMPLETION	Revisit Annually	Revisit Annually	Revisit Annually	2030	2030	Ongoing
APPROXIMATE COST	Staff Time and Consultant Fees	Staff Time	Staff Time and Materials	Varies based on site conditions, equipment type, installation requirements, and play surface	Varies based on fixture type, installation requirements, and electrical service	Staff Time and Materials
FUNDING SOURCES	User Fees, General Fund	General Fund, Volunteers	General Fund, Transient Lodging Tax, Sponsorships, Donations, Volunteers	NOCs, General Fund, Sponsorships, Donations	Grants, General Fund, Transient Lodging Tax	General Fund, Transient Lodging Tax
PROJECT LEADS AND PARTNERS	Project Lead: APHO Staff, Consultant as Needed Support: City Council, Parks Advisory Board	Project Lead: APHO Staff, City of Services	Project Lead: APHO Staff		Project Lead: APHO Staff	

OPEN HOUSE #4

Draft Implementation Strategy

Look for the following information today!

- Target Completion Date
- Approximate Cost
- Potential Funding Sources
- Project Leads & Partners

PROGRAMS							
	COMMUNITY EVENTS	YOUTH RECREATION PROGRAMS				ADULT RECREATION PROGRAMS	
ACTION ITEM	A. Increase free and/or low-cost events (e.g. movies in the park, festive occasions, and fun runs)	A. Increase swimming lessons and opportunities for advanced techniques and competitive programming	B. Increase athletics programs for K-5 age range	C. Provide non-sports activity programs for K-5 age range	D. Provide non-sports activity programs for K-5 age range	A. Increase quantity and variety of fitness classes (e.g. Spin, barre, and aquatic-based programs)	B. Improve offerings by investing in high-quality equipment and certifications and training for instructors
TIMEFRAME TO INITIATE	0 - 2 Years	0 - 2 Years	1 - 5 Years	1 - 5 Years	1 - 5 Years	0 - 2 Years	0 - 2 Years
TARGET COMPLETION	Revisit Annually	Revisit Annually	Revisit Annually	Revisit Annually	Revisit Annually	Revisit Annually	Revisit Annually
APPROXIMATE COST	\$5,000 - \$20,000	\$50,000 - \$50,000	\$75,000 - \$150,000	\$50,000 - \$50,000	\$50,000 - \$50,000	\$50,000 - \$25,000	\$50,000 - \$25,000
FUNDING SOURCES	Grants, User Fees, General Fund, Sponsorships, Donations, Volunteers	User Fees, Other Trust	User Fees, Sponsorships, Donations, Volunteers	User Fees, Sponsorships, Donations, Volunteers	User Fees, Sponsorships, Donations, Volunteers	User Fees	User Fees
PROJECT LEADS AND PARTNERS	Project Lead: APFD Staff Support: Parks Advisory Board, Astoria Community Foundation	Project Lead: APFD Staff Support: Parks Advisory Board, Astoria Community Foundation				Project Lead: APFD Staff Support: Parks Advisory Board, Astoria Community Found	

RECOMMENDATIONS

Categories

- Operations & Maintenance
- Capital Projects
- Programs
- Planning Initiatives



IMPLEMENTATION PLAN

Funding Sources

- **Current Funding Sources**

- General Fund
- User Fees
- System Development Charges (SDCs)
- Sponsorship, Donations, and Volunteers
- Urban Renewal Funds
- General Obligation (GO) Bonds

- **Example Funding Sources**

- Local Option Levy
- Parks Utility Fee
- Food and Beverage Tax

RECOMMENDATIONS SUMMARY

Operations & Maintenance

This category relates to priorities for APRD's operational and administrative functions.

Objectives - Functional services, alignment with community needs.

Tasks/Items - Planning, budgeting, staffing, routine maintenance to parks and facilities.



RECOMMENDATIONS SUMMARY

Operations & Maintenance

- ① Communications and Marketing
- ② Safety
- ③ Park and Trail Maintenance
- ④ Department Revenue and Fees
- ⑤ Aquatic Center Operations



RECOMMENDATIONS SUMMARY

Capital Projects

This category includes recommendations for physical enhancements to Astoria's parks and facilities.

Higher cost, longer term investments.

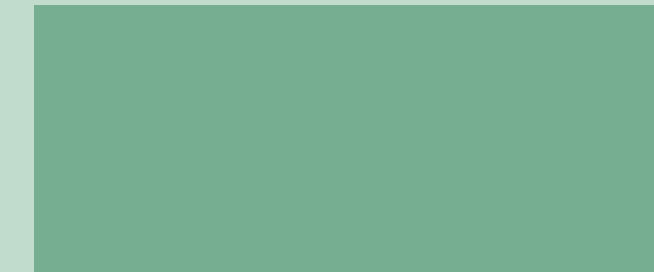
Master Plan enables pursuit of funding opportunities and grants.



RECOMMENDATIONS SUMMARY

Capital Projects

- ① Aquatic Center Enhancement and Expansion
- ② Public Restrooms
- ③ Heritage Square
- ④ Dog Park
- ⑤ Riverwalk Lighting
- ⑥ Sport/Recreation Amenity Upgrades



RECOMMENDATIONS SUMMARY

Programs

This category includes recommendations for APRD program offerings such as youth and adult sports, fitness classes, and community events.

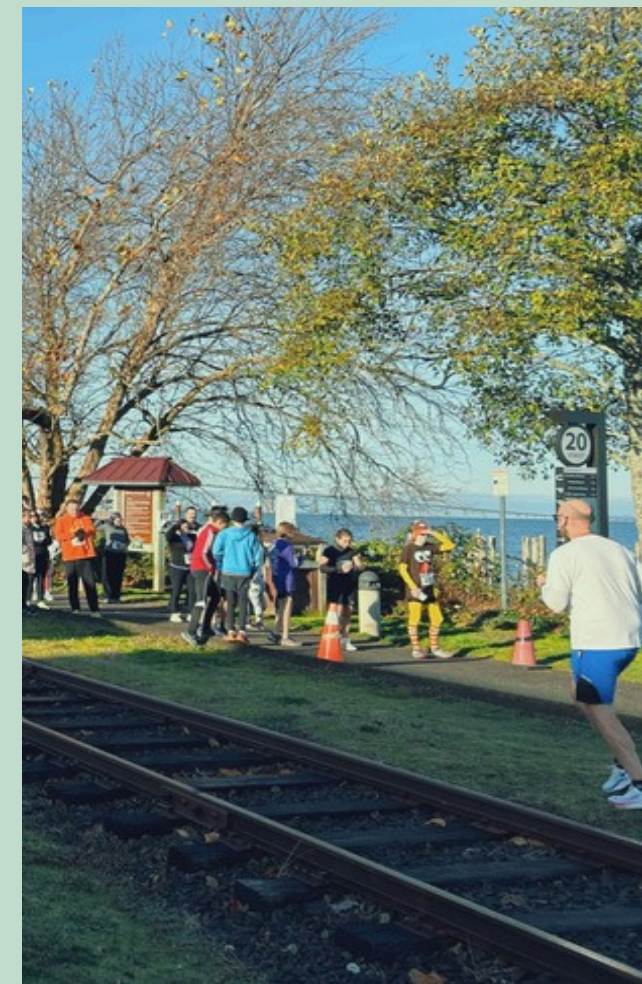
Identifies core programs and services to align with community priorities and define required resources and funding.



RECOMMENDATIONS SUMMARY

Programs

- ① Community Events
- ② Youth Recreation Programs
- ③ Adult Recreation Programs



RECOMMENDATIONS

Planning Initiatives

Defines specific areas for further planning.

Helps refine APRD's efforts to pursue opportunities to enhance facilities and services, meet community needs.

Propvides opportunities to obtain grant funding.



RECOMMENDATIONS SUMMARY

Planning Initiatives

- ① Update Comprehensive Plan Policies
- ② Update Trails Master Plan
- ③ Park & Trail Enhancement Opportunities
- ④ System-wide Wayfinding Plan
- ⑤ Opportunities for Improving Level of Service





Q & A - Thank You!

